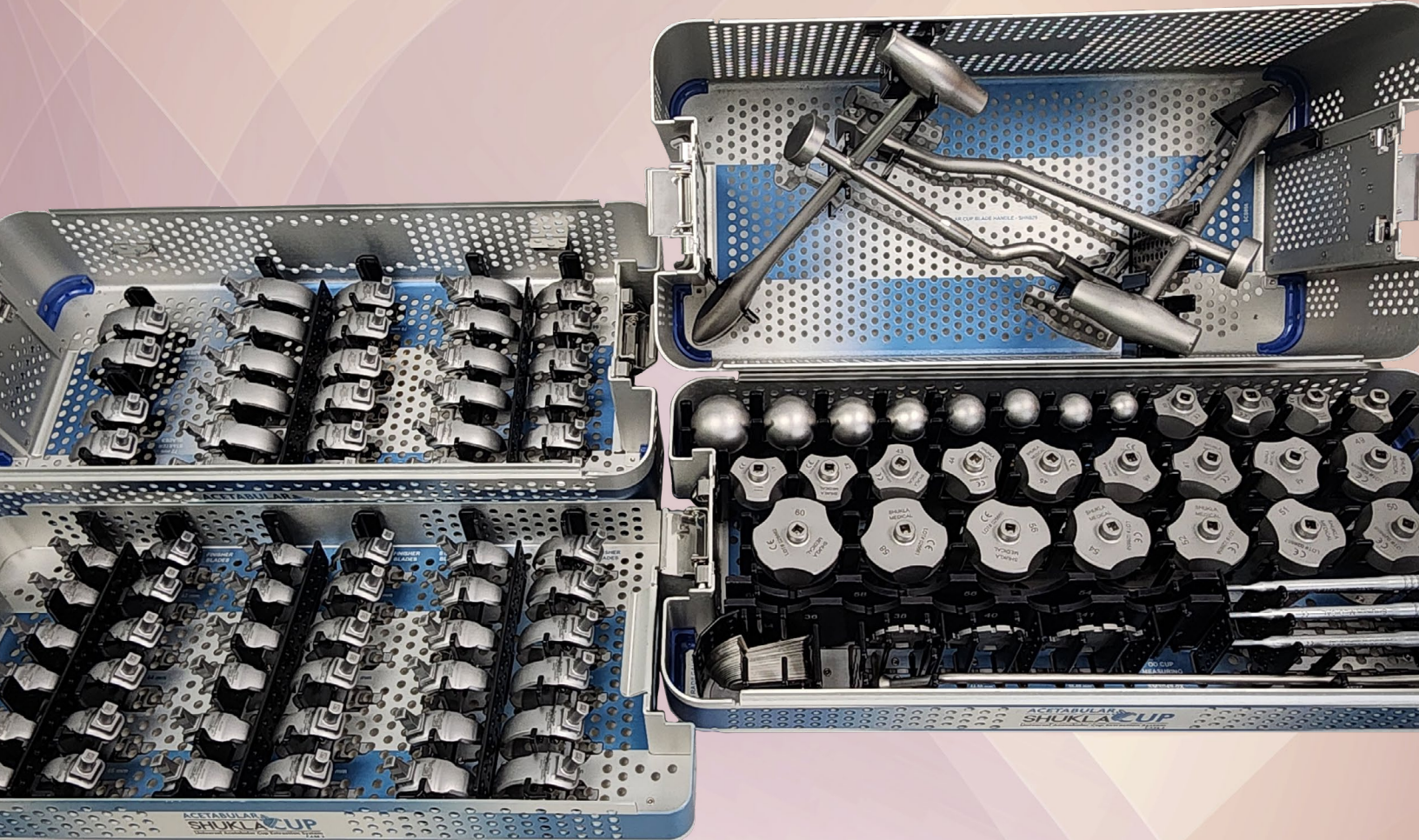


PRODUCT GUIDE

ACETABULAR SHUKLA CUP

Universal Acetabular Cup Extraction System

#19
System 19 of 25



SHUKLA MEDICAL[®]
Universal Orthopedic Extraction Technologies
THE EXTRACTION EXPERTS

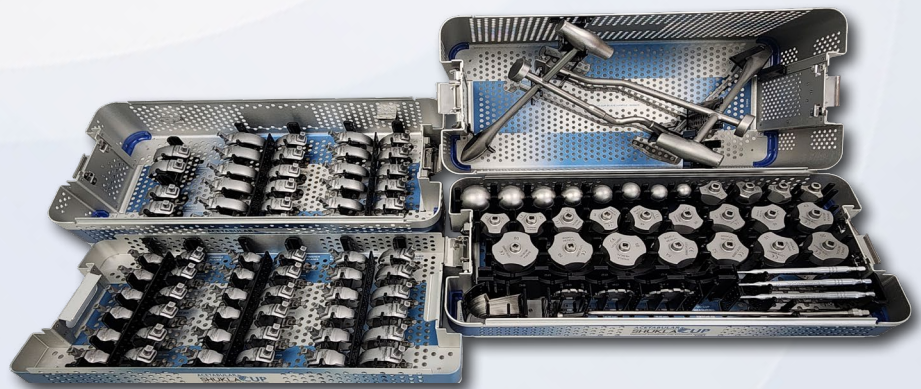
ACETABULAR SHUKLA CUP

Universal Acetabular Cup Extraction System

System Name: SHUKLA Cup v1

Primary Use

The SHUKLA Cup Universal Acetabular Cup Extraction System is designed for the removal of acetabular cups during hip revision surgeries. The system contains a universal range of blades and a variety of instrumentation designed for the rapid extraction of acetabular cups while minimizing bone loss.



System History

Development on the SHUKLA Cup system began in 2015 in collaboration with both Dr. Minter and Dr. Oskouei. The need for a better acetabular cup removal product was known, and Shukla Medical was in a position to provide it. One must-have feature that was determined early on was the need for a way to measure the acetabular cup for blade size determination. The product also could not use our existing Strike Plate Frame, an issue that required a lot of creative engineering. The blade design alone went through 4 different iterations before the final design was settled on. After two separate prototype trials, the system was given the approval from the surgeons. Finally, after many years of hard work, the SHUKLA Cup system launched in 2023.

Version History

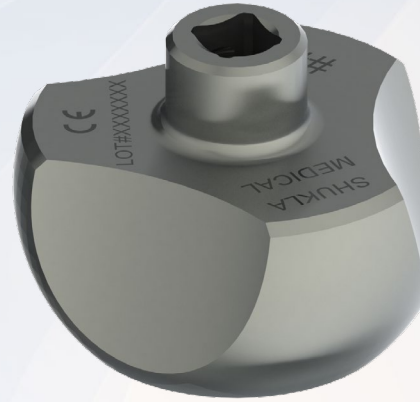
- 2023: Version 1 Introduced

Key Benefits

- Universal range of blades and instrumentation for the extraction of acetabular cups.
- Centering Balls and Centering Bobs are used to center the Cup Handle so that the blades properly go around the acetabular cup.



Centering Ball

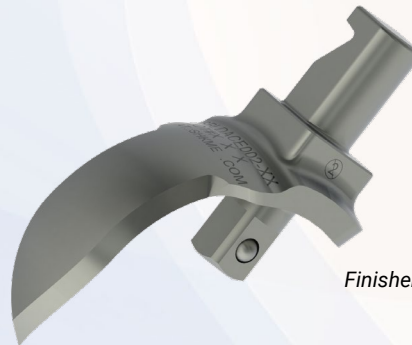


Centering Bob

- Starter Blades are used to make the initial cut into the bone around the acetabular cup while the Finisher Blades are used to complete the cut.



Starter Blade



Finisher Blade

- The Cup Handle provides surgeons with multiple strike surfaces and complete control over how and where cuts into the bone are made.

Universal Shukla System Benefits for Better Patient Outcomes

Less Time Spent in O.R.

- Reduces risk of infection to patient
- Reduces time spent under anesthesia
- Reduces cost to the hospital

Universal Designs

- Less prep time for surgeons
- Less space taken up in the O.R.
- Reduces need for other systems or tools

Ergonomic Design

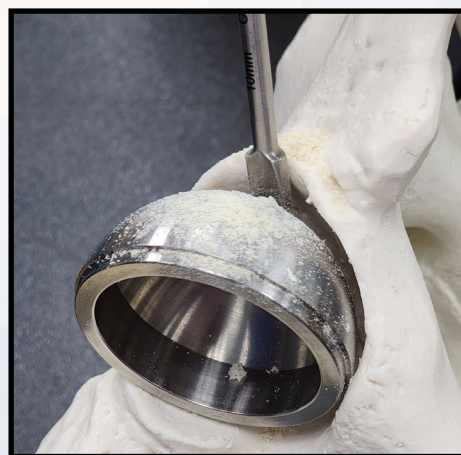
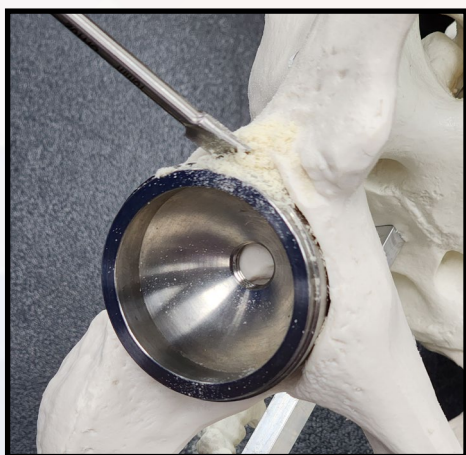
- Reduces surgeon stress
- Reduces surgeon fatigue
- Better grip/reduces slippage

Comprehensive Design

- Addresses all known challenges
- Tools ensure surgery is a success
- Provides backup solutions during surgery

Alternative Method Comparison

When entering a revision surgery that contains an acetabular cup, the best option would be to have a SHUKLA Cup on hand. Without a dedicated instrument to extract an acetabular cup, the most common alternative method in the O.R. is to resort to osteotomes or chisels. While these can get the job done eventually, surgeons and patients both lose out in this circumstance. Surgeons have to spend more time prepping the implant for extraction than normal, leading to longer time spent in the O.R. and more risk of fatigue. For the patient, it means a longer period of time under anesthesia as well as the risk of more significant bone loss. Both of these issues can be avoided by having a SHUKLA Cup in the room to make sure the tools needed for the revision are on hand and ready to be utilized.



A bone chisel being used to pry an acetabular cup away from the bone.

Return On Investment Justification

According to a study published in JAMA Surgery, the cost of one minute in an O.R. can vary anywhere from \$36 per minute to \$100 per minute, with the average cost of a minute in the O.R. at a staggering \$66! Taking just the lowest estimate of time savings, the savings per surgery can be estimated at 60 to 90 minutes. At 75 minutes per surgery, the savings would be $75 \times \$36$ per minute = \$2,700. The SHUKLA Cup sells for \$55,000, meaning that even at the lowest cost per minute in the O.R. it would take just over 20 uses for it to pay for itself. Considering how prevalent acetabular cups are during hip surgeries, it is easy to see just how quickly the SHUKLA Cup justifies itself.

When You Don't Have It

The fact that the SHUKLA Cup is a recent addition to the Shukla Medical portfolio means that surgeons have been extracting acetabular cups without us for quite some time. The SHUKLA Cup isn't here to pretend it is the only way to get out an acetabular cup. It is simply the most time efficient way that also happens to preserve the most bone in the patient. When a surgeon does not have our system in the O.R. it means that when it comes time to get the acetabular cup out, a roadblock is now being encountered. Whether through time and fatigue or through bone loss and subsequent bone replacements, the revision time becomes extended. Why stress yourself out or risk the patient when a better solution is now available?

With our universal range of Sizing Balls and Bobs and Starter and Finisher Blades, it does not matter if the exact implant is known prior to surgery. Our system gets the acetabular cup out with less time, less effort, and less bone loss. You value the time of your surgeons, your S.P.D, and your patients. Shukla Medical does as well.

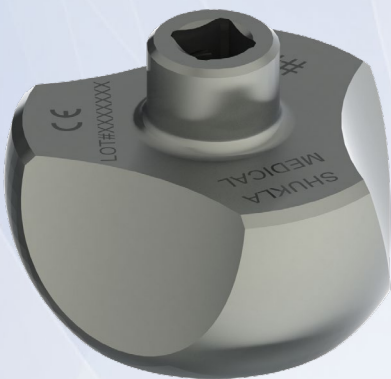
PATENTS

- Cup Handle
- Centering Bob
- Measurement Guide



Cup Handle

Has five different strike surfaces and two separate handholds. This allows for the striking of the blade in and out. The two handholds let the surgeon use both hands to apply torque as needed. The offset strike surface helps to create a large amount of cutting power for the blades.



Centering Bob

Centers the Cup Handle so that the Starter or Finisher Blade properly goes around the circumference of the acetabular cup.



Measurement Guide

Used for the proper measuring and sizing of both the Starter and Finisher Blades.

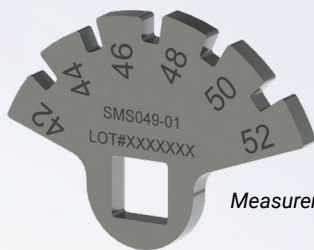
How We Compare

Most orthopedic implant manufacturers provide revision/extraction tools suited *only* for their own implants. Even suppliers that claim to offer extraction sets basically have an assortment of tools thrown together as an afterthought. For Shukla Medical, **extraction is what we do**. Our engineers design truly universal tools to help remove any implant/hardware out there, making our competition essentially nonexistent. Our patented designs are revolutionizing the art of revision surgery; we proudly stand alone. We have still tried to provide a comparison to other systems on the market.

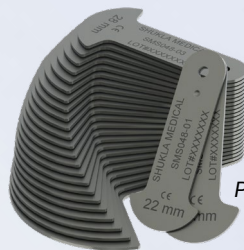
The SHUKLA Cup is in a league of its own when it comes to the extraction of acetabular cups. Our Cup Handle provides two different handholds for two-handed torque control. Additionally, the Cup Handle is offset to keep the force in line when impacting. All of the blades, balls, and bobs in the system are quick-connect for ease of use and swapping. Because all of our components are manual, the SHUKLA Cup helps guarantee precision cuts into the bone around the acetabular cup at all times.

Attention to Detail

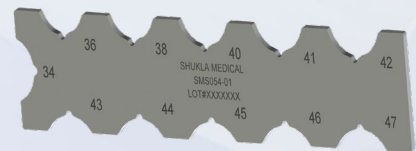
All of Shukla Medical's systems are filled with smart engineering decisions both big and small, and the SHUKLA Cup is no exception. When it comes to finding the proper size of blade needed for the soon-to-be extracted acetabular cup, the SHUKLA Cup has multiple options. The system's Measuring Gauges, Radii Gauge Assembly, and Polly Radii Gauges all allow surgeons to find the exact fit they need for an extraction with minimal bone loss.



Measurement Gauge



Poly Radii Gauge



Radii Gauge Assembly



The SHUKLA Cup's Cup Handle has five distinct strike areas so that surgeons can impact a blade in or out from any orientation. The two handholds let surgeons use both hands when operating the Cup Handle for precision cutting into the acetabular cup with the equipped blade.

Strike Area

Components List

Component List			
Std Qty	Part Number	Description	
1	SCS058	Case 1, Acetabular Cup	CASE #1
1	SCS050	Lid, Case 1, Acetabular Cup	
2	SHN029	Handle, Blade, Acetabular Cup	
1	SCS056	Case 2, Acetabular Cup	CASE #2
1	SCS059	Tray, Case 2, Acetabular Cup	
1	SCS050	Lid, Case 2, Acetabular Cup	
2	SBLDACE001-42	Blade, Ace Cup, 42mm, Starter, Single Use	
2	SBLDACE001-44	Blade, Ace Cup, 44mm, Starter, Single Use	
2	SBLDACE001-46	Blade, Ace Cup, 46mm, Starter, Single Use	
2	SBLDACE001-48	Blade, Ace Cup, 48mm, Starter, Single Use	
2	SBLDACE001-50	Blade, Ace Cup, 50mm, Starter, Single Use	
2	SBLDACE001-52	Blade, Ace Cup, 52mm, Starter, Single Use	
2	SBLDACE001-54	Blade, Ace Cup, 54mm, Starter, Single Use	
2	SBLDACE001-56	Blade, Ace Cup, 56mm, Starter, Single Use	
2	SBLDACE001-58	Blade, Ace Cup, 58mm, Starter, Single Use	
2	SBLDACE001-60	Blade, Ace Cup, 60mm, Starter, Single Use	
2	SBLDACE001-62	Blade, Ace Cup, 62mm, Starter, Single Use	
2	SBLDACE001-64	Blade, Ace Cup, 64mm, Starter, Single Use	
2	SBLDACE001-66	Blade, Ace Cup, 66mm, Starter, Single Use	
2	SBLDACE001-68	Blade, Ace Cup, 68mm, Starter, Single Use	
2	SBLDACE001-70	Blade, Ace Cup, 70mm, Starter, Single Use	
2	SBLDACE001-72	Blade, Ace Cup, 72mm, Starter, Single Use	
2	SBLDACE002-42	Blade, Ace Cup, 42mm, Finisher, Single Use	
2	SBLDACE002-44	Blade, Ace Cup, 44mm, Finisher, Single Use	
2	SBLDACE002-46	Blade, Ace Cup, 46mm, Finisher, Single Use	
2	SBLDACE002-48	Blade, Ace Cup, 48mm, Finisher, Single Use	
2	SBLDACE002-50	Blade, Ace Cup, 50mm, Finisher, Single Use	
2	SBLDACE002-52	Blade, Ace Cup, 52mm, Finisher, Single Use	
2	SBLDACE002-54	Blade, Ace Cup, 54mm, Finisher, Single Use	
2	SBLDACE002-56	Blade, Ace Cup, 56mm, Finisher, Single Use	
2	SBLDACE002-58	Blade, Ace Cup, 58mm, Finisher, Single Use	
2	SBLDACE002-60	Blade, Ace Cup, 60mm, Finisher, Single Use	
2	SBLDACE002-62	Blade, Ace Cup, 62mm, Finisher, Single Use	
2	SBLDACE002-64	Blade, Ace Cup, 64mm, Finisher, Single Use	
2	SBLDACE002-66	Blade, Ace Cup, 66mm, Finisher, Single Use	
2	SBLDACE002-68	Blade, Ace Cup, 68mm, Finisher, Single Use	
2	SBLDACE002-70	Blade, Ace Cup, 70mm, Finisher, Single Use	
2	SBLDACE002-72	Blade, Ace Cup, 72mm, Finisher, Single Use	

Component List			
Std Qty	Part Number	Description	
1	SCS055	Case 3, Acetabular Cup	CASE #3
1	SCS050	Lid, Case 3, Acetabular Cup	
1	SBD066-01	Centering Ball 22mm	
1	SBD066-02	Centering Ball 26mm	
1	SBD066-03	Centering Ball 28mm	
1	SBD066-04	Centering Ball 30mm	
1	SBD066-05	Centering Ball 32mm	
1	SBD066-06	Centering Ball 36mm	
1	SBD066-07	Centering Ball 40mm	
1	SBD066-08	Centering Ball 44mm	
1	SBD204-34	Centering Bob 34mm	
1	SBD204-36	Centering Bob 36mm	
1	SBD204-38	Centering Bob 38mm	
1	SBD204-40	Centering Bob 40mm	
1	SBD204-41	Centering Bob 41mm	
1	SBD204-42	Centering Bob 42mm	
1	SBD204-43	Centering Bob 43mm	
1	SBD204-44	Centering Bob 44mm	
1	SBD204-45	Centering Bob 45mm	
1	SBD204-46	Centering Bob 46mm	
1	SBD204-47	Centering Bob 47mm	
1	SBD204-48	Centering Bob 48mm	
1	SBD204-49	Centering Bob 49mm	
1	SBD204-50	Centering Bob 50mm	
1	SBD204-51	Centering Bob 51mm	
1	SBD204-52	Centering Bob 52mm	
1	SBD204-54	Centering Bob 54mm	
1	SBD204-56	Centering Bob 56mm	
1	SBD204-58	Centering Bob 58mm	
1	SBD204-60	Centering Bob 60mm	
1	SMS049-01	OD Cup Measuring Gauge 34-43mm	
1	SMS049-02	OD Cup Measuring Gauge 44-50mm	
1	SMS049-03	OD Cup Measuring Gauge 50-60mm	
1	SMS048	ID Radii Gauge Assembly	
1	SHN052	OD Gauge Handle	
1	SMS054-01	OD Polly Radii Gauge 34-47mm	
1	SMS054-02	OD Polly Radii Gauge 48-60mm	
3	SXT096	Poly Extractor	



THE EXTRACTION EXPERTS

Shukla Medical designs and manufactures instrumentation for orthopedic implant extraction at our headquarters in St. Petersburg, Florida, USA. We are proud to be an ISO 13485:2016 Certified company.

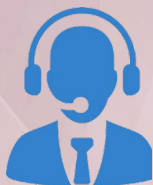
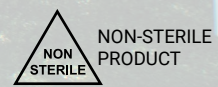
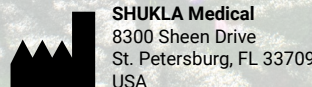
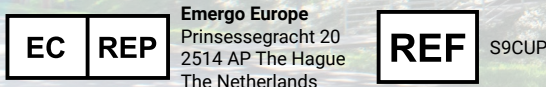
In 1998, aerospace component manufacturer S.S. White Technologies, Inc. acquired the Medical Products Division of Snap-On. S.S. White rebranded the medical division in 2007 to create Shukla Medical.

Today, Shukla Medical is the industry leader in orthopedic implant extraction tools. We are the only company to offer a comprehensive, truly universal orthopedic revision line for removing IM nails, hip and knee implants, spine hardware, and broken or stripped screws. Surgeons and industry leaders know: **If Shukla can't get it out, no one can.**

Contact us to learn more

Shukla Medical
8300 Sheen Drive
St. Petersburg, FL 33709
www.ShuklaMedical.com

T: 888-4-SHUKLA
T: 888-474-8552
F: 727-626-2770
CS@ShuklaMedical.com



SHUKLA Surgical Tech Support
24 hours a day, 7 days a week
727-626-2771

When you have tried all known techniques to extract an implant or remove a screw but determine you need suggestions for alternate techniques, help is only a phone call away. We will quickly put you in touch with our Technical Experts who will suggest other solutions to use our tools.



SHUKLA Medical offers the best warranty in the industry. Every component in a SHUKLA extraction system is designed and manufactured by us. Every component in our extraction systems that is not a single-use* or a wear* component is warranted against manufacturing defects for the life* of the system. All other parts are covered for as long as the purchased version of the system is actively marketed by SHUKLA Medical.

*Please see our website for the complete explanation of these terms and full details on our warranty.