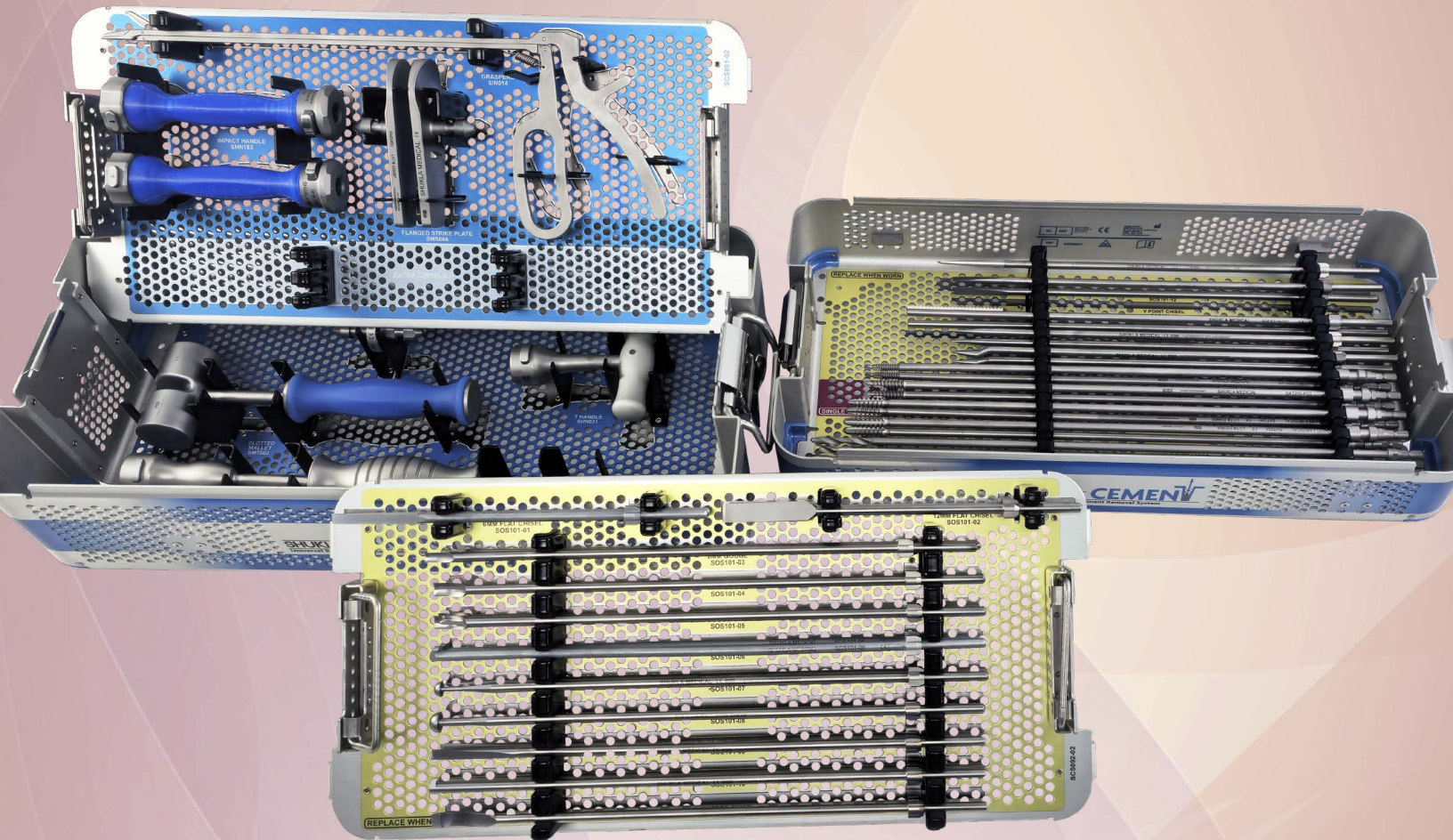


PRODUCT GUIDE

#24
System 24 of 28

SHUKLA CEMENT™

Universal Bone Cement Removal System



SHUKLA MEDICAL®
Universal Orthopedic Extraction Technologies
THE EXTRACTION EXPERTS

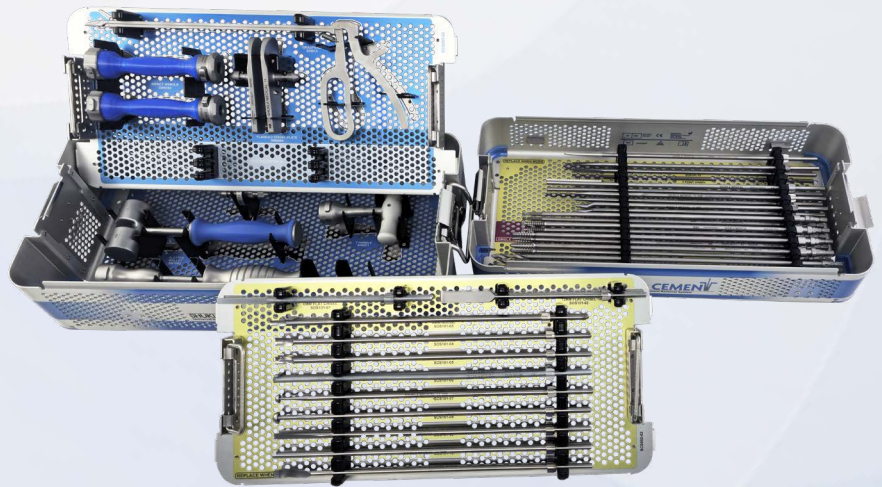
SHUKLA CEMENT™

Universal Bone Cement Removal System

System Name: SHUKLA Cement v1

Primary Use

The SHUKLA Cement Universal Bone Cement Removal System is designed to remove any bone cement found during revision surgery of cemented hip and knee implants. The SHUKLA Cement system gives surgeons every tool they need for the successful removal of bone cement during revision surgery.



System History

Over the years, one of the most consistent requests Shukla engineers had gotten was for the creation of a cement removal system. So much so that by 2021, development on the SHUKLA Cement officially began. Our engineers worked alongside a prominent surgeon to make sure the system was not only universal, but was designed to tackle any potential issue that could crop up during cement removal of a hip or knee revision. The SHUKLA Cement system became incredibly comprehensive, and debuted as an official system for Shukla Medical in the spring of 2026.

Version History

- 2026: Version 1 Introduced

Key Benefits

- Ability to remove bone cement during revision hip and knee surgeries using a variety of chisels, gouges, splitters, and more.
- 17 unique chisels, gouges, splitters, curettes, and picks designed to fracture and remove any bone cement encountered during a hip or knee revision.



- 2 Drills, 2 Drill Taps, and 2 Tap Extractors to remove any cement restrictors or cement plugs found during bone cement removal.



- Bell Chisel for 360 degree bone cement removal.



- Strike Plates apply crucial impaction and extraction force in-line with the cement removal. Additionally, the Strike Plates allow for eight different orientations to suit whatever angle a surgeon needs at any moment without the need to detach and reattach.

Universal Shukla System Benefits for Better Patient Outcomes

Less Time Spent in O.R.

- Reduces risk of infection to patient
- Reduces time spent under anesthesia
- Reduces cost to the hospital

Universal Designs

- Less prep time for surgeons
- Less space taken up in the O.R.
- Reduces need for other systems or tools

Ergonomic Design

- Reduces surgeon stress
- Reduces surgeon fatigue
- Better grip/reduces slippage

Comprehensive Design

- Addresses all known challenges
- Tools ensure surgery is a success
- Provides backup solutions during surgery

Alternative Method Comparison

Unlike other systems from Shukla Medical, the SHUKLA Cement does not offer a radically new or different solution to the problem that is bone cement removal. Bone cement removal has traditionally been performed using a combination of standard orthopedic instruments such as chisels, osteotomes, drills, and curettes. While effective in certain situations, these tools were never expressly designed for cement removal. As a result, surgeons historically have had to piece together solutions while in the O.R, supplementing with whatever instruments were on hand during surgery.

Other bone cement removal sets exist on the market, but they fall short of the SHUKLA Cement's capabilities in several ways. A lot of existing bone cement removal sets are often incomplete, requiring surgeons to supplement with additional instruments. Or they are not designed specifically for cement removal, reducing efficiency during surgery. Worse yet, many currently available sets are no longer supported and have become outdated.

Not having access to the right tool for the right moment is a common occurrence. Cement removal takes a lot longer in those instances, to the point where most surgeons dread having to remove it at all because of the tedium involved. Surgeons can continue to use what already exists, or they can use the SHUKLA Cement for a more streamlined and comprehensive solution.



Examples of some other cement removal sets on the market.

Return On Investment Justification

According to a study published in JAMA Surgery, the average cost for one minute in an O.R. is a staggering \$66! The median time spent in an O.R. per surgery is 75 minutes per surgery. Therefore, the typical per surgery cost could be calculated as 75 minutes per surgery x \$66 per minute for a total of \$4,950. The SHUKLA Cement system would pay for itself in less than eight surgeries.

When You Don't Have It

When a hospital does not have a SHUKLA Cement system in the room, bone cement removal becomes a much longer, much more tedious endeavor for the surgeon. With the SHUKLA Cement's variety of instrumentation, no matter what manner of bone cement a surgeon comes across, they'll have the best tool at their disposal. Having the right tool when they need it goes a long way towards reducing the frustration and lengthy removal times that are usually associated with cement removal. With cement removals taking less time as a result, the patient benefits from a decrease in time spent under anesthesia as well.

How We Compare

Most existing bone cement removal sets have some tools suited only for some situations. This often leads to incomplete or unsupported sets in the O.R. that don't fully offer what is needed during removal. At Shukla Medical, **extraction is what we do**. Our engineers design truly universal tools to help remove any bone cement that could be found during hip or knee revision surgery. Our comprehensive, patented designs are revolutionizing the art of revision surgery; we proudly stand alone.

Other cement removal systems exist on the market, none come close to the comprehensive and universal capabilities of the SHUKLA Cement. Every chisel, drill tap, curette, splitter, gouge, and pick in our system was purposefully engineered for cement removal, not merely adapted from general orthopedic use. When bone cement needs to be removed, the SHUKLA Cement stands tall as the system to offer virtually any tool a surgeon could possibly need.

PATENTS

- Drill Tap
- Bell Chisel
- X-Tip Chisel
- Rounded Point Chisel
- T-Handle
- Impact Handle
- Slotted Mallet
- Slide Hammer

The SHUKLA Cement system is packed with patented parts! Our engineering team worked incredibly hard on each and every component.

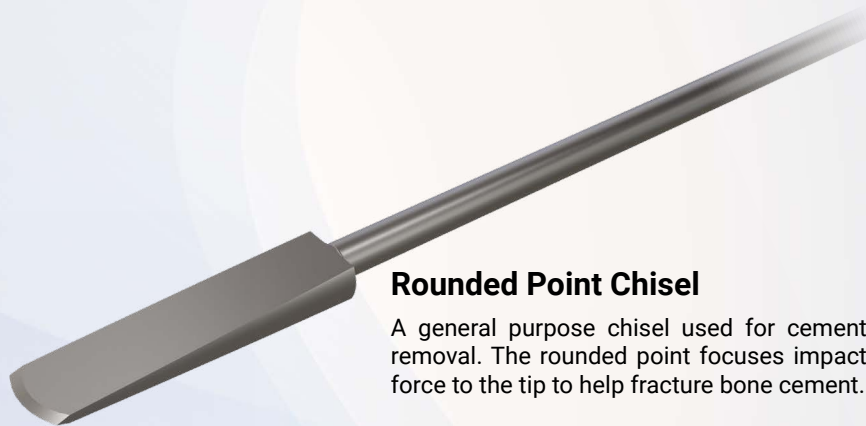
Drill Tap

Combines a drill tip with cutting threads. Used under power to drill and self tap into cement restrictors. Has a hudson connection that can be used with standard orthopedic drills.



Rounded Point Chisel

A general purpose chisel used for cement removal. The rounded point focuses impact force to the tip to help fracture bone cement.



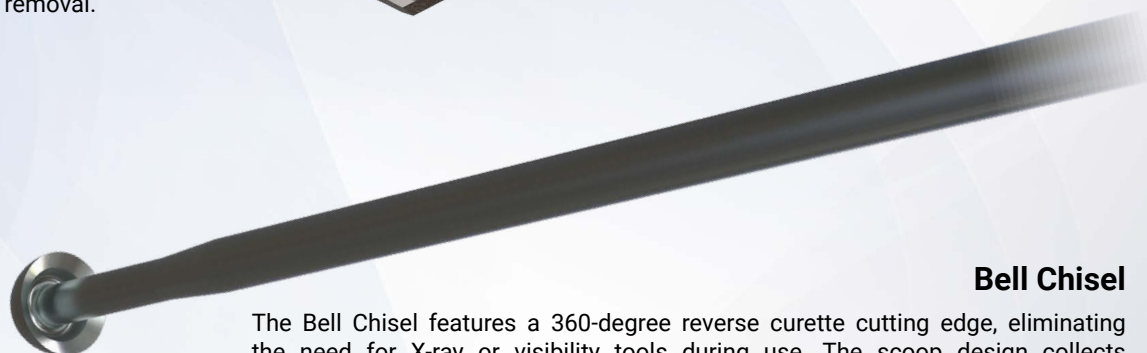
X-Tip Chisel

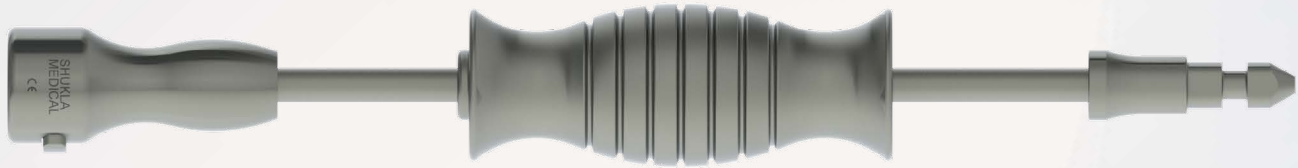
Features a pointed tip that is used for fracturing cement mantles for easier removal.



Bell Chisel

The Bell Chisel features a 360-degree reverse curette cutting edge, eliminating the need for X-ray or visibility tools during use. The scoop design collects cement fragments and pulls them out of the canal, making it great for canal wall debridement and removal of smaller cement deposits. It works regardless of rotational orientation.





Slide Hammer

Quick-connect functionality allows the slide hammer to be equipped and engaged in moments, allowing for rapid removal of bone cement.



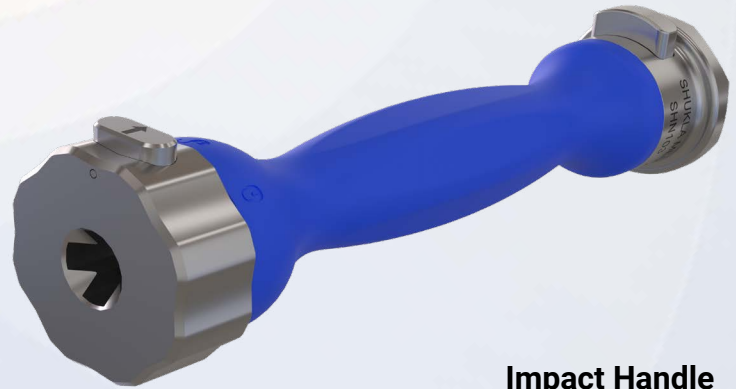
Slotted Mallet

Allows for controlled impacts on any of the chisels, gouges, and other instrumentation. The slot allows the mallet to be guided up the shaft for accurate strikes.



T-Handle

Quick-connect capability allows for rapid insertion of components. It has a release button for quick disengagement. The symmetric T-shape allows for solid and stable grip while removing bone cement using a strike plate.



Impact Handle

Accepts and locks any bone cement removal component for use. The back hub connection end is push-to-connect. Accessories such as the Flanged Strike Plate and Hub Adaptor can be inserted into this end to quickly lock them into place.

Attention to Detail

The SHUKLA Cement is the culmination of years of engineering work being married to surgical consultation. The fruits of that union can be seen throughout the system. One example is the design of the Cement Graspers. As opposed to generic graspers already on the market, our graspers were specifically designed for bone cement chip removal, and as a result are incredibly effective.



Another example is that thanks to the 360 degree nature of the Bell Chisel, surgeons don't need to use an X-Ray or visibility tool for positioning. By being 360 degrees it works regardless of position.

Our Drill Taps take what is traditionally a two-step process by existing cement removal sets and reduces it down to a one-step process that reduces time and tedium in a cement removal procedure.



Components List

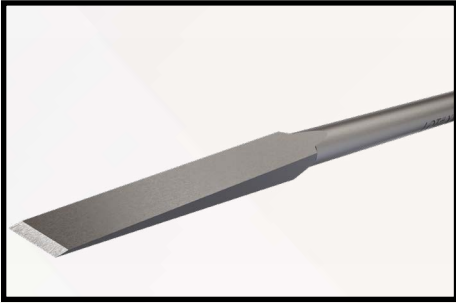
Component List			
Std Qty	Part Number	Description	
1	SCS091-01	Case 1, Instruments, Cement System	CASE 1
1	SCS091-02	Tray, Case 1, Instruments , Cement System	
2	SCS011	Lid, Universal, Standard	
1	SAD016	Adapter, Hub, Male to Male	
1	SHN031	T-Handle, Female Chuck	
2	SHN103	Handle, Impact	
1	SIN012	Slide Hammer, Adapter Cap, Female Chuck	
1	SIN014	Graspers, Cement	
2	SMS066	Strike Plate, Flanged	
1	SMT003	Mallet, Slotted	
1	SCS092-01	Case 2, Chisels, Cement System	
1	SCS092-02	Tray, Case 2, Chisels, Cement System	
2	SDL001	Drill, 6mm	
2	SDL002	Drill, 7mm	
2	SOS101-01	Chisel, Flat, 6mm	
2	SOS101-02	Chisel, Flat, 12mm	
2	SOS101-03	Chisel, Gouge, 6mm	
2	SOS101-04	Chisel, Gouge, 9mm	
2	SOS101-05	Chisel, Gouge Splitter, 9mm	
2	SOS101-06	Chisel, Curette, Reverse	
2	SOS101-07	Chisel, Bell, 9mm	
2	SOS101-08	Chisel, Bell, 12mm	
2	SOS101-09	Chisel, Cement Splitter	
2	SOS101-10	Chisel, Hook, Retrograde	
2	SOS101-11	Chisel, Cupped	
2	SOS101-12	Chisel, Rounded Point	
2	SOS101-13	Chisel, V-Tip	
2	SOS101-14	Chisel, X-Tip, Pointed	
2	SOS101-15	Chisel, Cement Saw	
2	SOS101-16	Chisel, Pick, Straight	
2	SOS101-17	Chisel, Pick, Angled	
2	SXT204	Extractor, Drill Tap, 6mm, Single Use	
2	SXT205	Extractor, Drill Tap, 8mm, Single Use	
2	SXT220	Extractor, Tap, 8mm	
2	SXT221	Extractor, Tap, 10mm	

Single-use Only: Always use new Drill Taps in every procedure. Discard any used Drill Taps at the conclusion of the case.

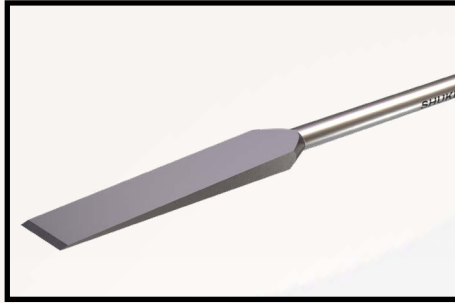
Components List

FLAT CHISELS

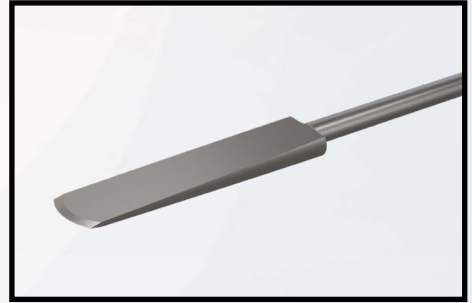
SOS101-01 Chisel, Flat, 6mm



SOS101-02 Chisel, Flat, 12mm

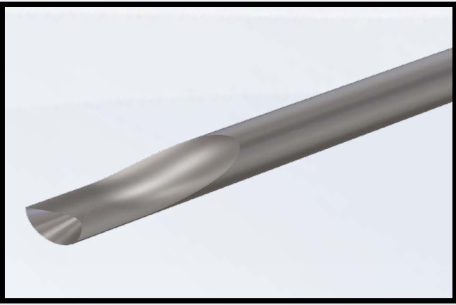


SOS101-12 Chisel, Rounded Point

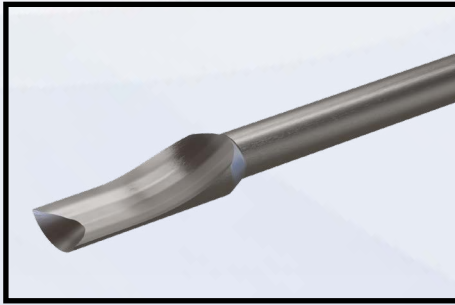


GOUGES

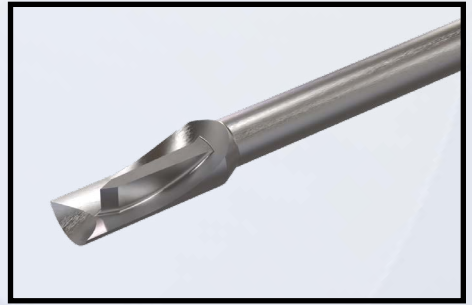
SOS101-03 Chisel, Gouge, 6mm



SOS101-04 Chisel, Gouge, 9mm

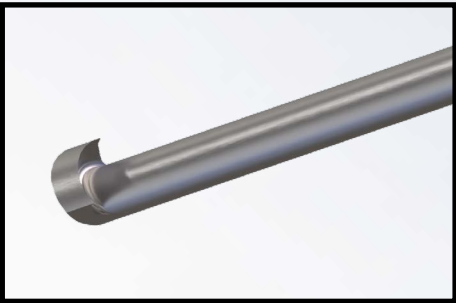


SOS101-05 Chisel, Gouge Splitter, 9mm

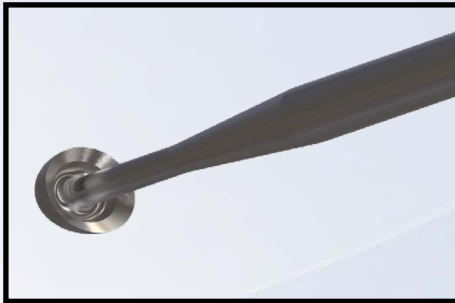


REVERSE CURETTES

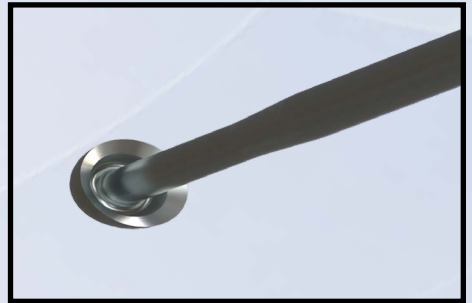
SOS101-06 Chisel, Curette, Reverse



SOS101-07 Chisel, Bell, 9mm

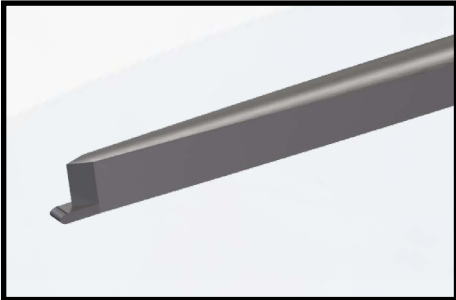


SOS101-08 Chisel, Bell, 12mm

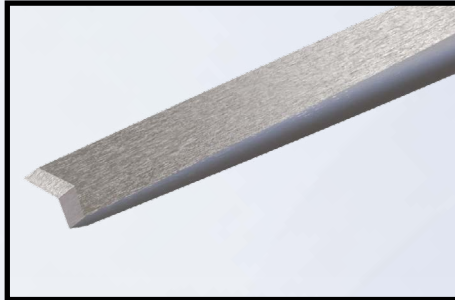


SPLITTERS

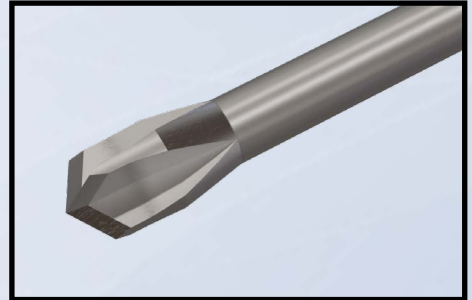
SOS101-09 Chisel, Cement Splitter



SOS101-13 Chisel, V-Tip



SOS101-14 Chisel, X-Tip, Pointed



Components List

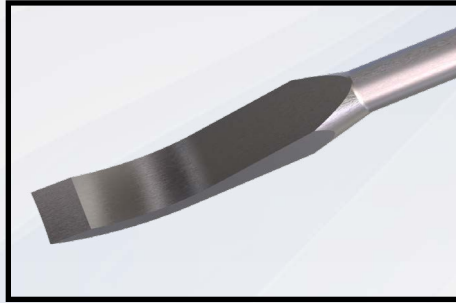
HOOK

SOS101-10 Chisel, Hook, Retrograde



CUPPED

SOS101-11 Chisel, Cupped



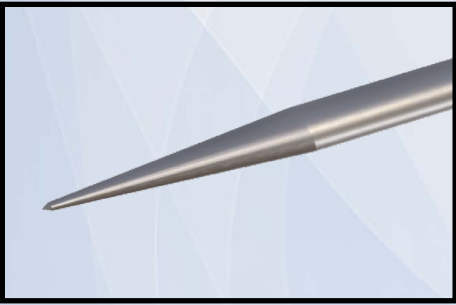
SAW

SOS101-15 Chisel, Cement Saw

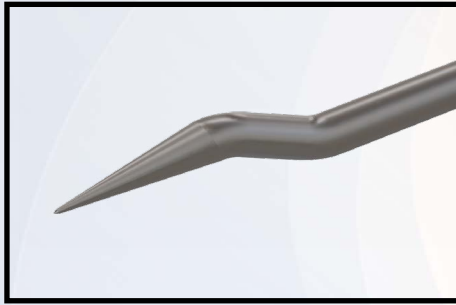


PICKS

SOS101-16 Chisel, Pick, Straight



SOS101-17 Chisel, Pick, Angled

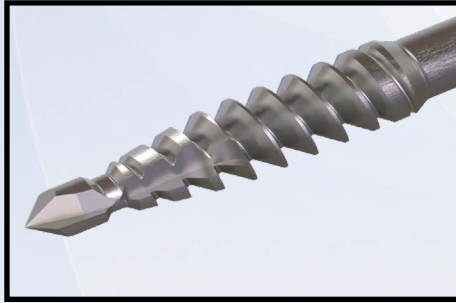


DRILL TAPS

SXT204 Drill Tap, 6mm

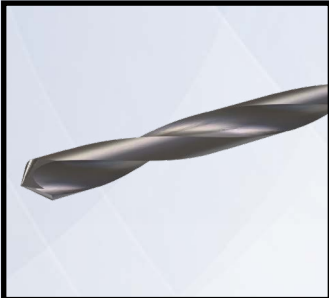


SXT205 Drill Tap, 8mm

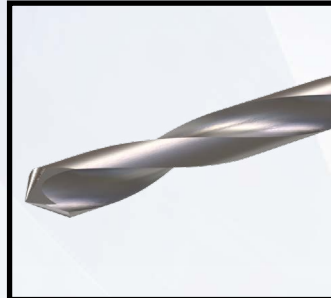


DRILLS

SDL001 Drill, 6mm



SDL002 Drill, 7mm



TAPS

SXT220 Tap Extractor, 8mm



SXT221 Tap Extractor, 10mm





THE EXTRACTION EXPERTS

Shukla Medical designs and manufactures instrumentation for orthopedic implant extraction at our headquarters in St. Petersburg, Florida, USA. We are proud to be an *ISO 13485:2016* Certified company.

In 1998, aerospace component manufacturer S.S. White Technologies, Inc. acquired the Medical Products Division of Snap-On. S.S. White rebranded the medical division in 2007 to create Shukla Medical.

Today, Shukla Medical is the industry leader in orthopedic implant extraction tools. We are the only company to offer a comprehensive, truly universal orthopedic revision line for removing IM nails, hip and knee implants, spine hardware, and broken or stripped screws. Surgeons and industry leaders know: **If Shukla can't get it out, no one can.**

Contact us to learn more

Shukla Medical
8300 Sheen Drive
St. Petersburg, FL 33709
www.ShuklaMedical.com

T: 888-4-SHUKLA
T: 888-474-8552
F: 727-626-2770
CS@ShuklaMedical.com



Emergo Europe
Westervoortsedijk 60
6827 AT Arnhem
The Netherlands



S9CEMENT



SHUKLA Medical
8300 Sheen Drive
St. Petersburg, FL 33709
USA



CONSULT
INSTRUCTIONS
FOR USE

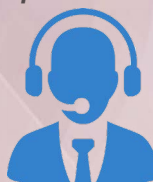


NON-STERILE
PRODUCT



Above CE marks are not valid unless it is present on the product label. For EU class 1 devices, the CE mark will not include the four digit notified body number.

For the most up-to-date version of this literature, please refer to our website at <https://shuklamedical.com/Products>



SHUKLA Surgical Tech Support
24 hours a day, 7 days a week
727-626-2771

When you have tried all known techniques to extract an implant or remove a screw but determine you need suggestions for alternate techniques, help is only a phone call away. We will quickly put you in touch with our Technical Experts who will suggest other solutions to use our tools.



SHUKLA Medical offers the best warranty in the industry. Every component in a SHUKLA extraction system is designed and manufactured by us. Every component in our extraction systems that is not a single-use* or a wear* component is warranted against manufacturing defects for the life* of the system. All other parts are covered for as long as the purchased version of the system is actively marketed by SHUKLA Medical.

*Please see our website for the complete explanation of these terms and full details on our warranty.